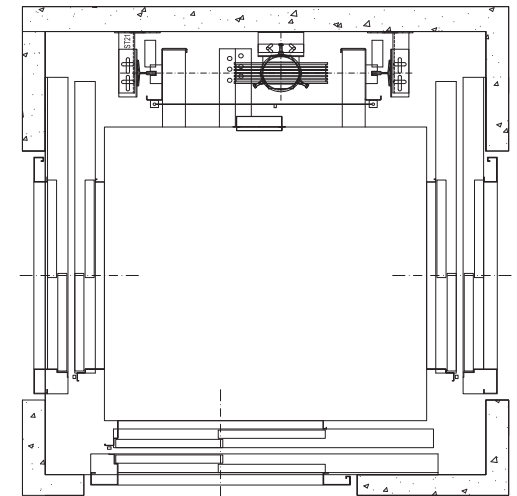
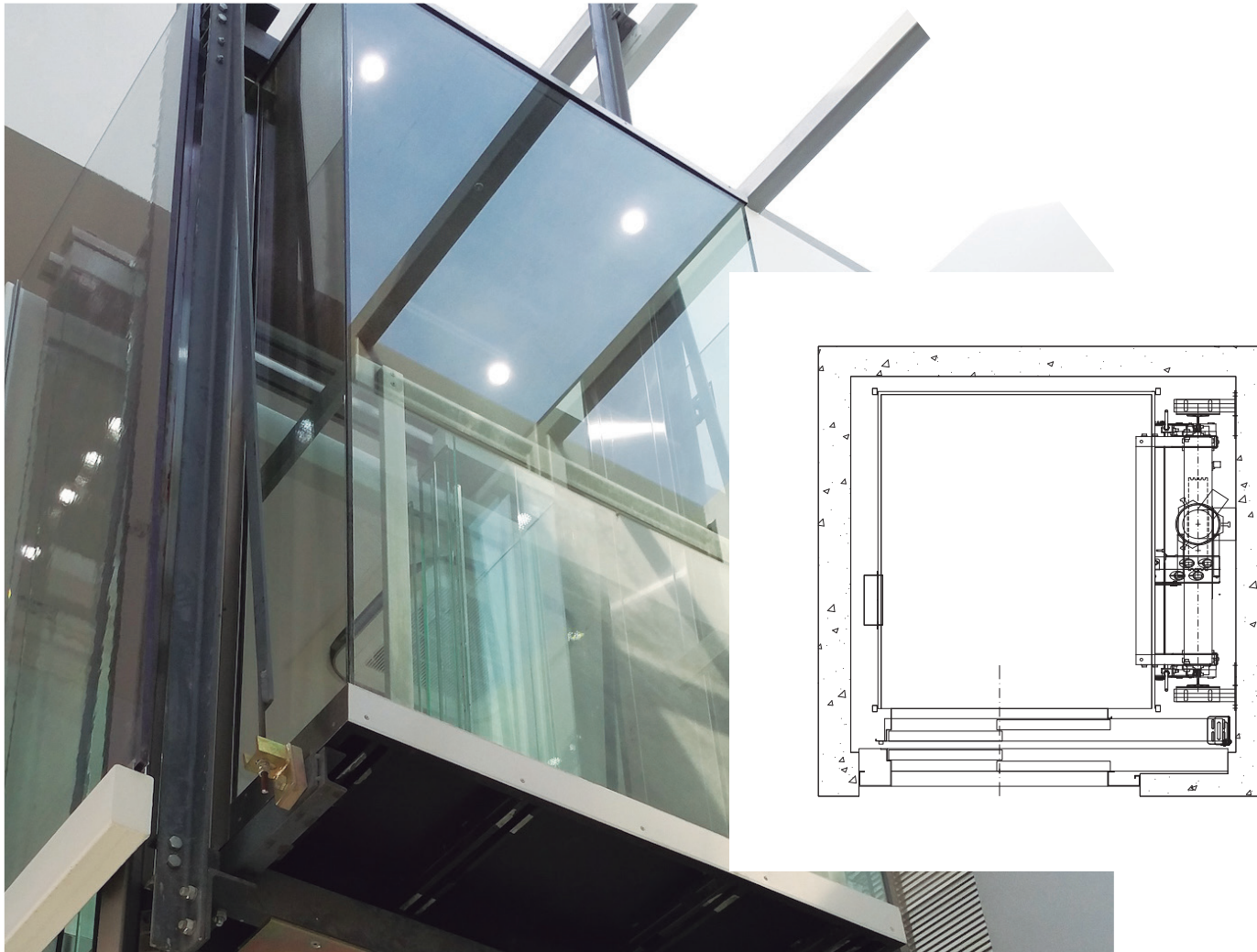


Hydraulic

Passenger Lift

HYDRONIC

Hydronic is the ideal hydraulic lift for existing buildings, capable of adapting to any kind of shaft.

**Applications**

- Residential buildings
- Modernizations
- Existing shafts
- Refurbishment
- Reduced shafts

Advantages

Versatility:

We adapt each lift to each different shaft optimizing spaces.

Reduced pit and headroom:

In existing buildings, we adapt our lifts in compliance with the Regulations for pit and headroom. (EN 81.21).

Comfort:

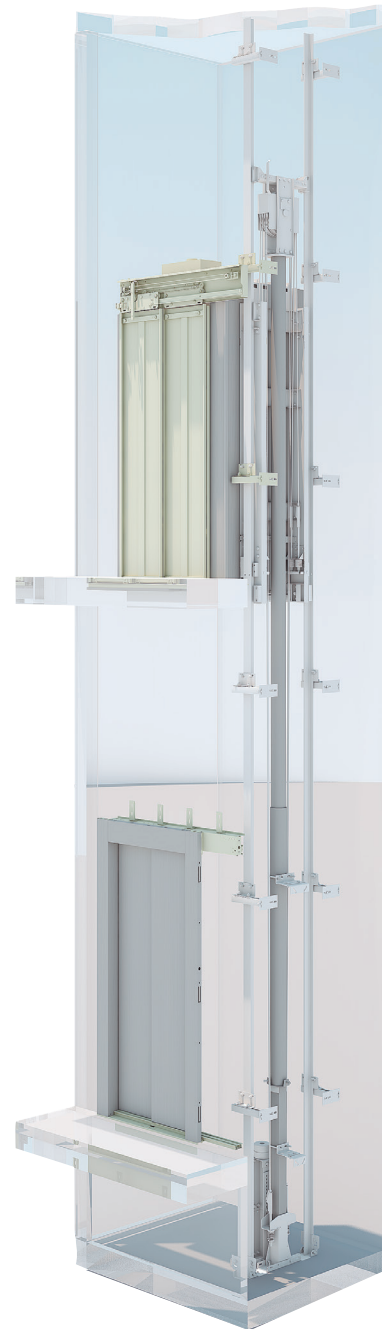
Excellent level of comfort, equivalent to a traction lift using electronic valves.

Adaptability:

Easy control and maintenance.

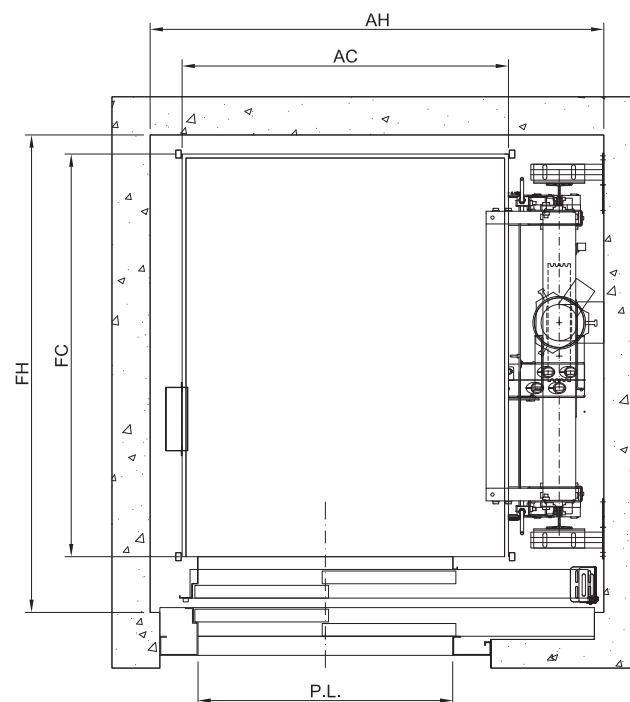
Emergency rescue:

Automatic emergency system always active during the descent, even in the event of power failure.



Technical Features

Duty speed:	0,63 m/s (Option Up to 1 m/s)
Duty load:	Up to 1800 kg.
Standard pit:	1200 mm.
Standard headroom:	3500 mm.
Travel:	Up to 25m.
Other options:	Cabinets.



Cabinets

Type	Width (mm)	Depth (mm)	Height (mm)
TIPO 1	785	364	2052
TIPO 2	960	510	2162
E650	1000	650	2200

Manufacturers

Car Frame	EMESA
Hydraulic equipment	GMV, MORIS, BUCHER
Doors	FERMATOR, WITTUR, MEILLER
Control panel	CARLOS SILVA, SPRINTE, NEWLIFT, DIGITAL ADVANCE, ARKEL, LESTER, MEGOM
Pushbuttons	BST, SCHAEFER, DEWHURST

Standard sizes

Q (kg)	AH	FH	AC	FC	PL
320	1300	1250	900	1000	700
450	1400	1500	1000	1250	800
630	1550	1650	1100	1400	900
1000	1620	2360	1100	2100	900
1500	1950	2660	1400	2400	1100
1800	2700	2050	2050	1800	1700

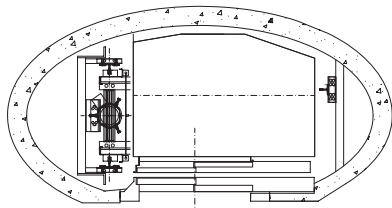
* Data for installations with single entrance, automatic doors, standard pit and headroom. Other configurations or shaft sizes, on request.

Low Pit (EN81.21)		
Q (kg)	Low Pit (mm)	Required pheadroom (mm)
320	250	2730
450	265	2655
630	265	2655
800	350	3010
1000	350	3020

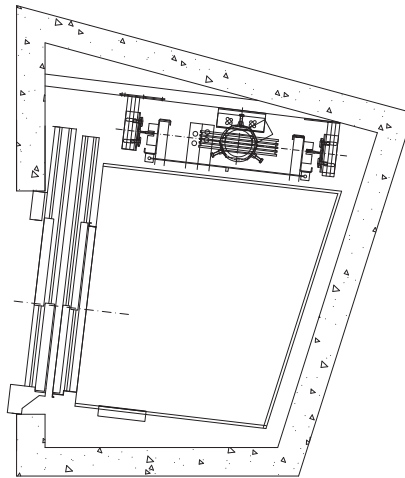
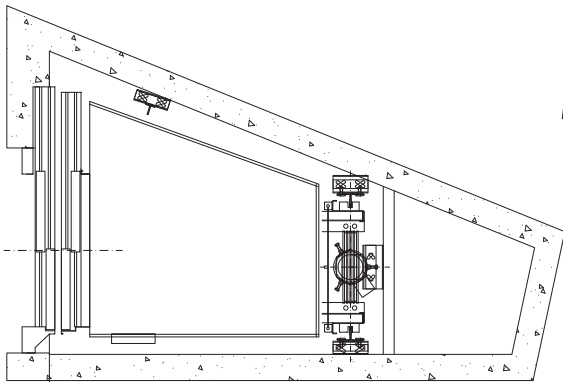
* Average pit or headroom sizes, on request. Minimum calculated headroom with a car interior height of 2005 mm

Customised solutions

Panoramic



Irregular shaft



Borehole piston

